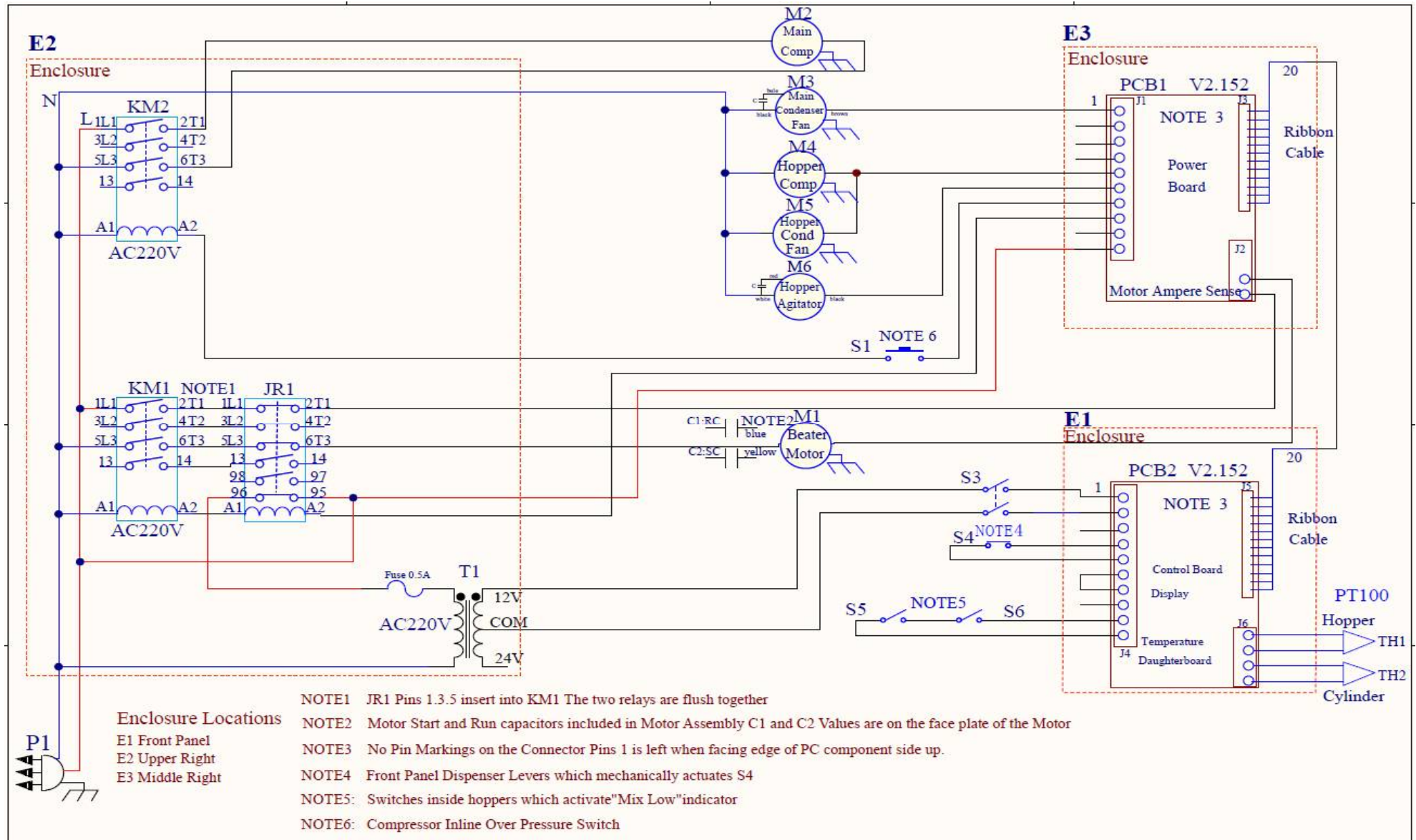


1. Electrical Drawing and Components



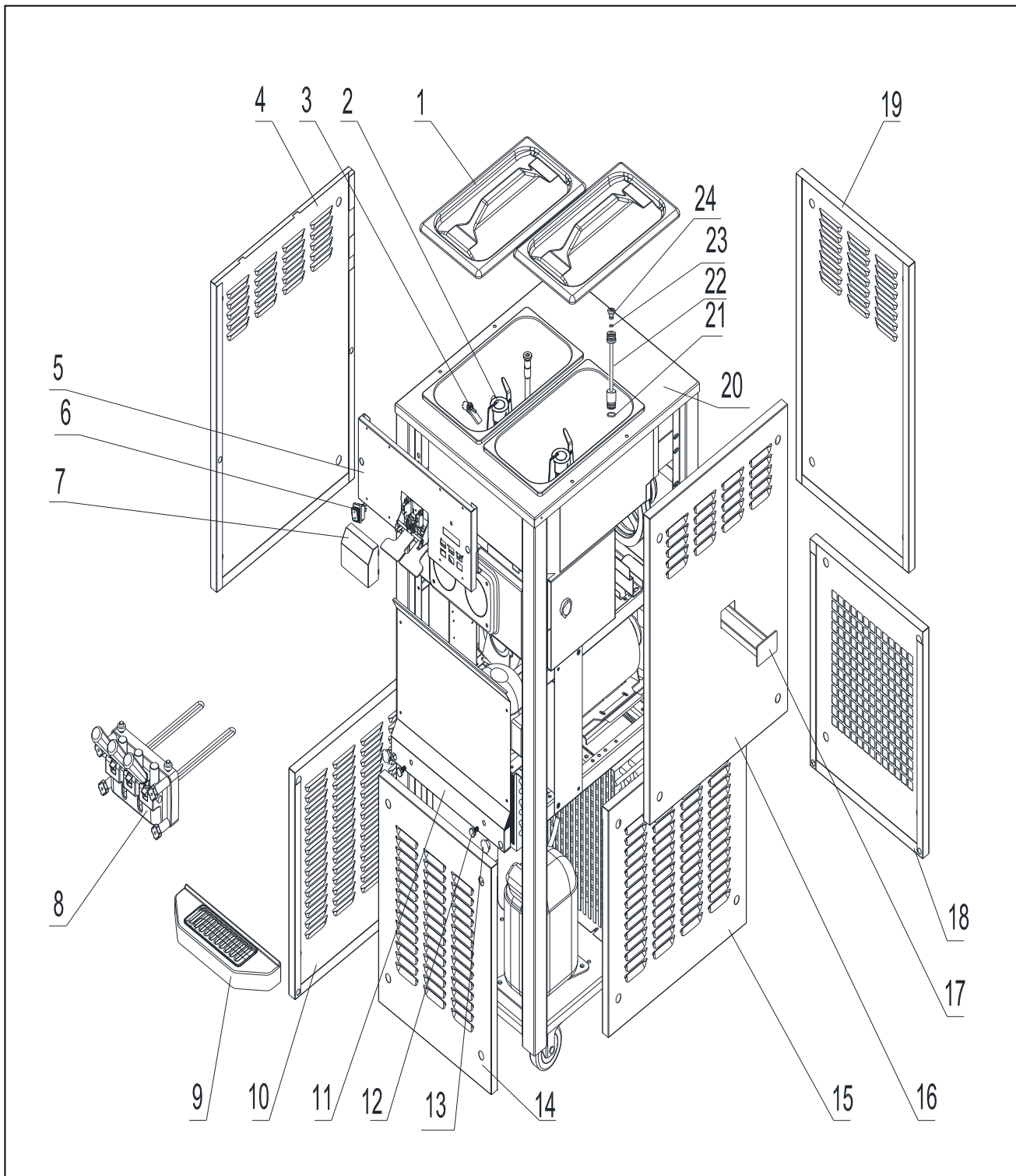
SPARE PARTS LIST MODEL 6240

1. Electrical Drawing and Components

Item	Parts Number	QTY.	Description
M1	3.3.01.06.004	1	Motor – Beater 220/1100W/50HZ
M2	3.2.01.02.033	1	Compressor – Tecumseh CAJ2446
M3	3.2.03.03.004	1	Fan Motor - Main
M4	3.2.01.01.002	1	Compressor – Mix
M5	3.2.03.01.001	1	Fan Motor - Mix
M6	3.3.01.01.001	1	Agitator Motor
JR	3.1.01.02.012	1	Thermal Overload Relay
KM1	3.1.01.01.010	1	Contactator of Motor
KM2	3.1.01.01.010	1	Contactator of Compressor
T	3.1.01.04.002	1	Transformer
TH	3.1.02.13.020	2	Thermostat PT100
PC1	2.2.1.01.0007	1	Power Board
PC2	2.2.1.01.0004	1	Microprocessor Control Board
S1	3.2.04.06.005	1	Pressure Switch – Main Compressor
S3	3.1.03.03.003	1	Power Switch
S4	3.1.03.01.004	1	Switch - Draw
S5/S6	3.1.03.04.009	2	Indicator “Mix Low”
Fuse	3.1.02.08.002	1	Fuse

SPARE PARTS LIST MODEL 6240

2. Final Assembly



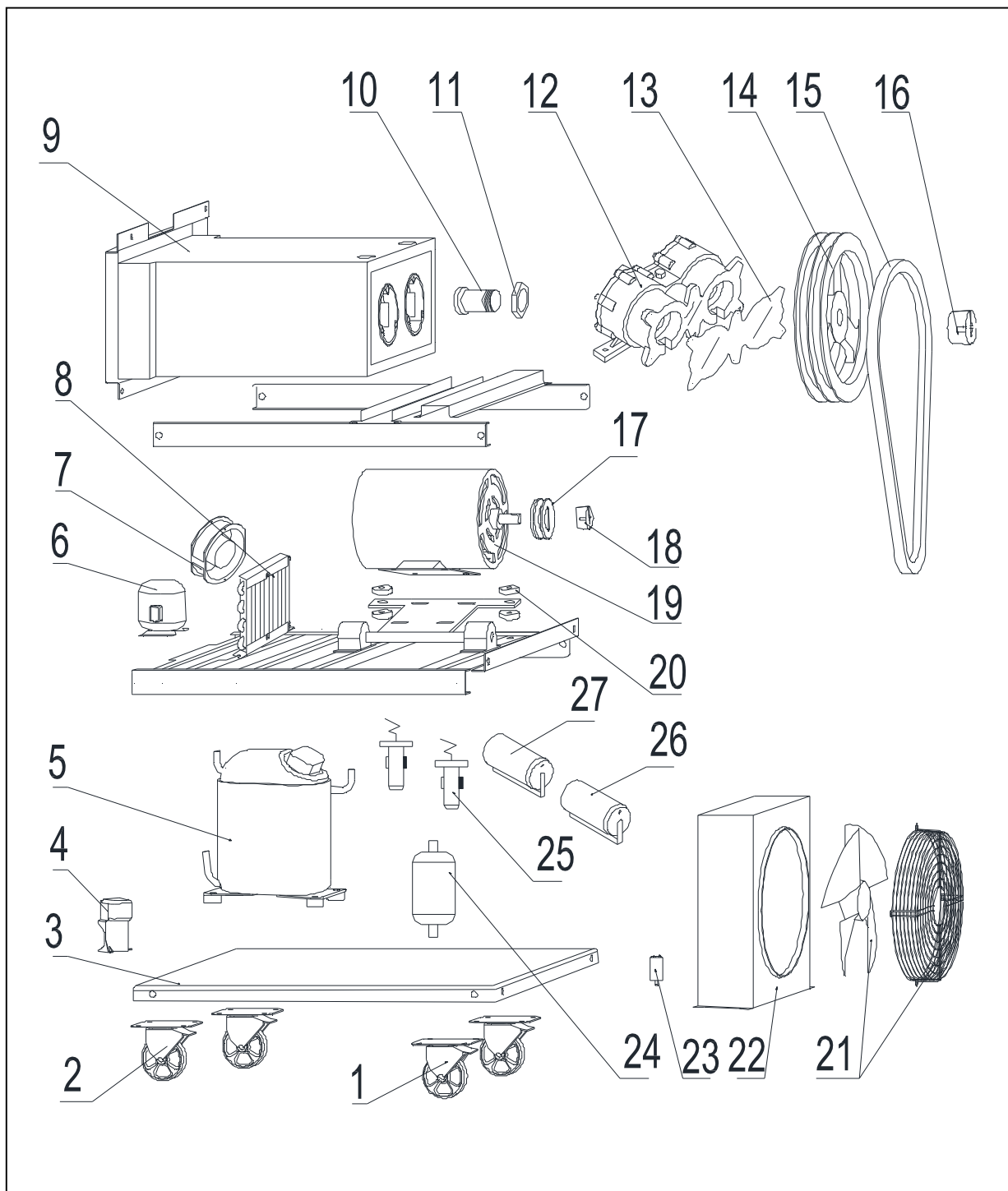
SPARE PARTS LIST MODEL 6240

2. Final Assembly

Item	Parts Number	QTY.	Description
1	3.4.03.01.004	2	Top Cover
2	2.1.1.23.0001	2	Blade – Agitator
3	3.1.03.04.009	2	Indicator “Mix Low”
4	2.3.4.31.001	1	Panel - Upper Right
5	2.3.4.08.001	1	Panel - Upper Front
6	3.1.03.03.003	1	Power Switch
7	3.4.07.07.004	1	Cover of Spigot Switch
8	2.1.1.15.0007	1	Dispensing Door Assembly
9	3.4.04.01.002	1	Drip Pan
10	2.3.4.32.001	1	Panel - Lower Left
11	2.3.4.26.002	1	Panel - Middle Front
12	3.6.39.004	2	Bolt - Drip Pan
13	3.4.07.01.001	5	Snapper
14	2.3.4.27.004	1	Panel - Lower Front
15	2.3.4.32.001	1	Panel - Lower Right
16	2.3.4.31.001	1	Panel - Upper Right
17	3.4.04.02.001	1	Rear Drip Tray
18	2.3.4.25.001	1	Panel - Lower Rear
19	2.3.4.24.001	1	Panel - Upper Rear
20	2.1.1.03.0055	1	Hopper Assembly
21	3.4.08.01.002	8	Seal – Feed Tube, $\phi 18 \times 2.2$
22	3.4.07.04.020	2	Feed Tube
23	3.4.08.01.028	8	Seal – Air Orifice Cap, $\phi 6.2 \times 1.9$
24	2.1.3.23.0001	2	Air Orifice Cap– Feed Tube

SPARE PARTS LIST MODEL 6240

3. Inside



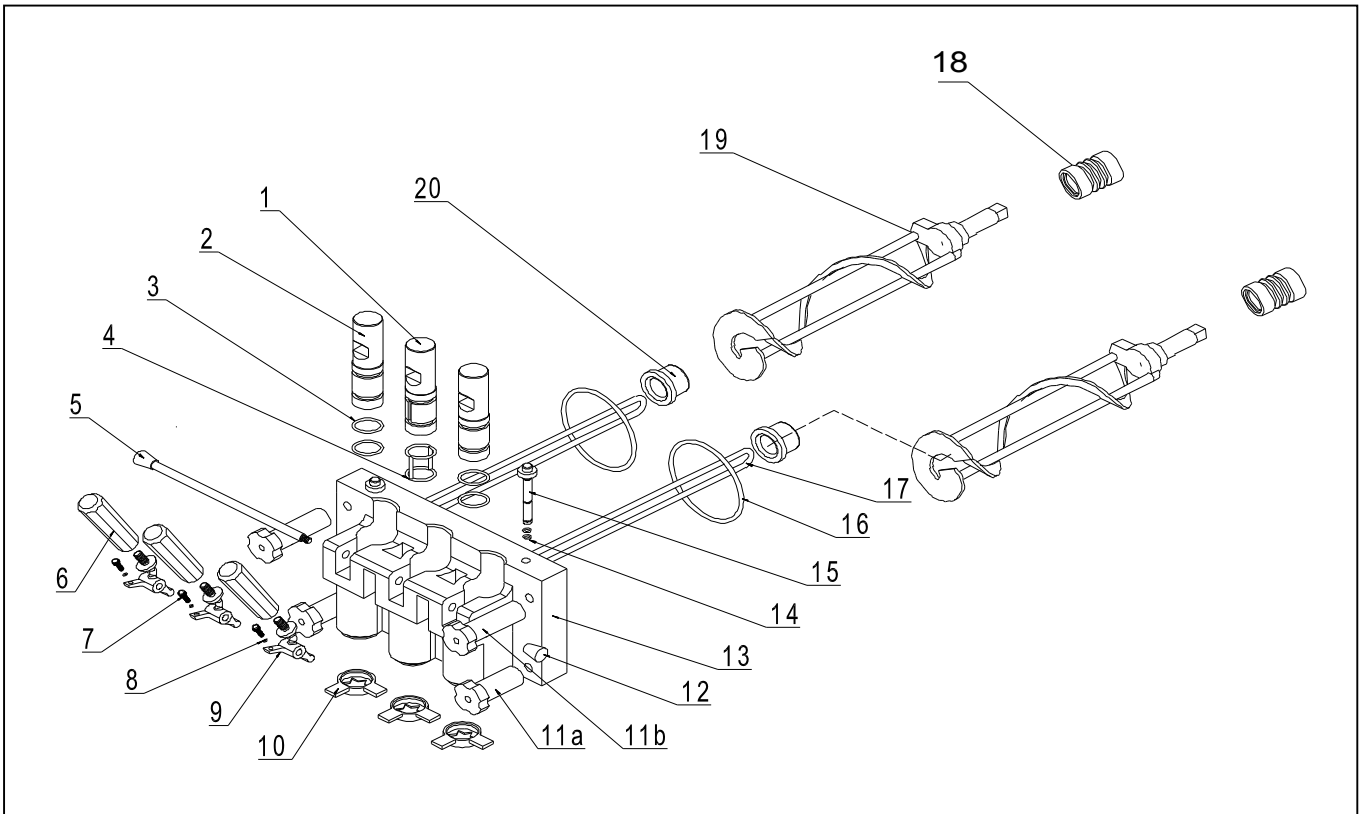
SPARE PARTS LIST MODEL 6240

3. Inside

Item	Parts Number	QTY.	Description
1	3.3.05.02.001	2	Caster- Swivel
2	3.3.05.01.001	2	Caster - Fixed
3	2.2.4.01.0019	1	Chassis
4	3.2.01.04.011	1	Accessories – Compressor
5	3.2.01.02.033	1	Compressor– CAJ2446
6	3.2.01.01.002	1	Compressor – Mix
7	3.2.03.01.001	1	Fan Motor - Mix
8	3.2.02.01.001	1	Condenser – Mix
9	2.1.1.06.0004	1	Cylinder Assembly
10	3.3.02.02.001	2	Rear Shell Bearing - Cylinder
11	3.3.02.02.010	2	Nut – Rear Shell Bearing
12	3.3.02.01.012	1	Gear Box
13	3.7.23.001	1	Gasket – Gear Box
14	3.3.04.02.009	1	Pulley – Gear Box
15	3.3.03.01.012	2	Belt – Beater Motor
16	3.3.04.01.015	1	Bushing – Gear Box Pulley
17	3.3.04.02.003	1	Pulley - Motor
18	3.3.04.01.006	1	Bushing – Motor Pulley
19	3.3.01.06.004	1	Motor – Beater 1100W/50HZ/1PH
20	3.4.08.04.001	4	Rubber Gasket
21	3.2.03.03.004	1	Fan Motor - Main
22	3.2.02.01.005	1	Condenser – Main
23	3.2.03.03.004-1	1	Capacitor -Fan Motor Main
24	3.2.04.05.003	1	Filter Dryer – Main
25	3.2.04.01.001	2	Thermostatic Expansion Valve
26	3.1.02.22.030	1	Running Capacitor – 30uf / 450V
27	3.1.02.22.050	1	Starting Capacitor – 250uf / 450V

SPARE PARTS LIST MODEL 6240

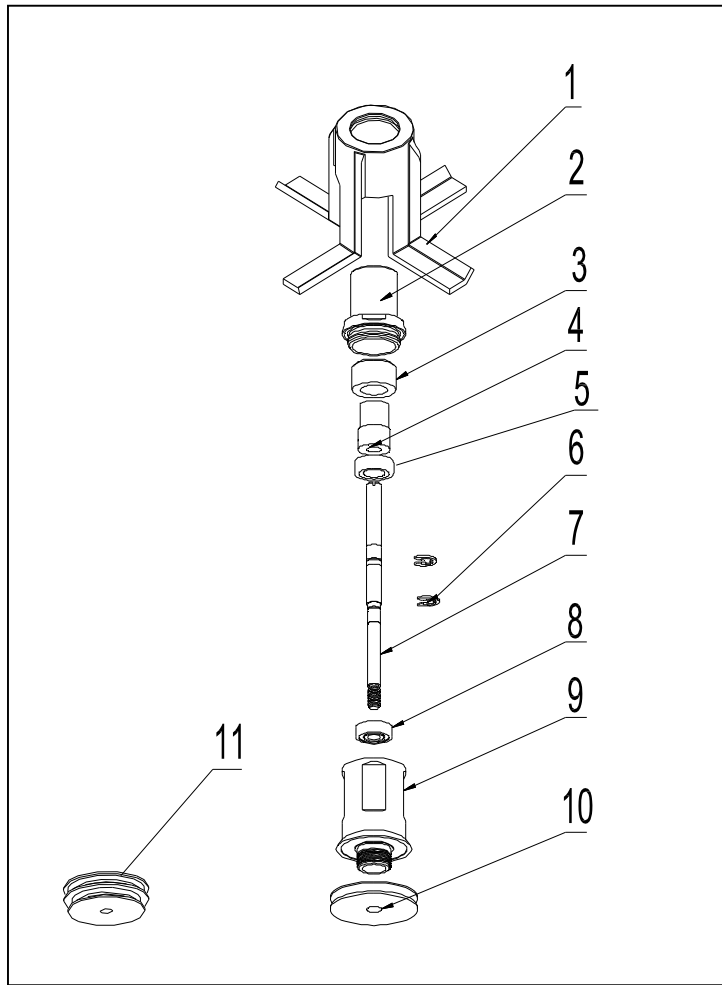
4. Dispensing Door and Beater



Item	Parts Number	Description	Qty.
1	2.1.3.02.0003	Draw Valve - Middle	1
2	2.1.3.01.0009	Draw Valve - Side	2
3	3.4.08.01.011	Seal - Side Draw Valve, ϕ 19*3/3.15	4
4	3.4.08.01.019	Seal - Middle Draw Valve, ϕ 19*3*2	1
5	2.1.3.27.0002	Dispensing Retention	1
6	3.4.05.01.001	Dispensing Handle	3
7	3.6.39.009	Screw - Handle Adjustment Seat	3
8	3.4.08.01.012	Seal - Handle Adjustment Seat, ϕ 3*1.5	3
9	2.1.3.26.0001	Dispensing Handle Seat	3
10	3.4.05.03.005	Design Cap	3
11a	3.4.05.02.001	Attaching Nuts - Short	2
11b	3.4.05.02.002	Attaching Nuts - Long	2
12	2.1.3.27.0025	Retention Nut	1
13	2.1.3.14.0003	Dispensing Door	1
14	3.4.08.01.013	Seal - Plug-Prime, ϕ 9*1.9/2.0	4
15	2.1.3.02.0015	Plug-Prime	2
16	3.4.08.02.007	Seal - Dispensing Door	2
17	2.1.1.11.0001	Beater Rod	2
18	3.4.07.05.001	Seal - Beater Shaft	2
19	2.1.1.09.0001	Beater	2
20	3.4.01.03.001	Front Bearing	2

SPARE PARTS LIST MODEL 6240

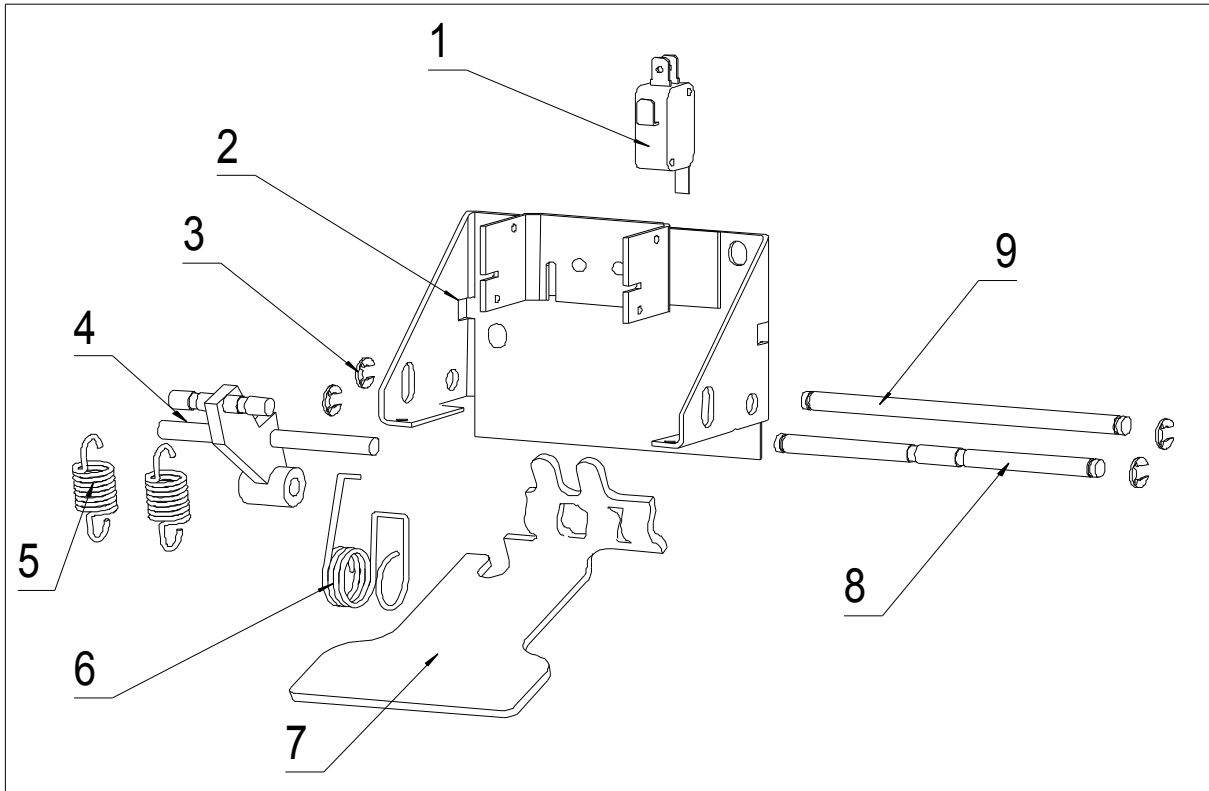
5. Hopper Agitator



Item	Part Number	Description	Qty.
1	2.1.1.23.0002	Blade – Agitator, STD	2
2	2.1.4.02.005	Cap – Drive Shaft Housing	2
3	2.1.4.02.002	Magnet	2
4	2.1.4.02.003	Shaft – Magnet	2
5	3.3.02.07.003	Bearing – Upper, S6000Z	2
6	3.6.34.003	Lock Ring, $\varnothing 8$	4
7	2.1.3.42.0001	Shaft – Spin, 248	2
8	3.3.02.07.004	Bearing – Lower, S609Z	2
9	2.1.4.02.001	Drive Shaft Housing	2
10	2.1.4.02.015	Pulley – Agitator, away from motor	1
11	2.1.4.02.016	Pulley – Agitator, close to motor	1

SPARE PARTS LIST MODEL 6240

6. Draw Switch



Item	Parts Number	Description	Qty.
1	3.1.03.01.004	Draw Switch - KW-7-9	1
2	2.2.4.24.0003	Bracket – Draw Switch	1
3	3.6.34.002	Lock Ring, $\varnothing 6$	4
4	2.1.1.19.0006	Frame - Spring	1
5	3.6.02.002	Spring	2
6	3.6.01.002	Spring - Return	1
7	2.1.4.05.012	Arm - Return	1
8	2.1.4.05.001	Rod – Front	1
9	2.1.4.05.002	Rod - Rear	1

SPARE PARTS LIST MODEL 6240

7. Accessories

Item	Parts	Description	Qty.
1	3.7.15.002	Lubricant	1
2	3.4.07.01.002	Pick Tool - O-Ring Removal	1
3	Kit-6225	Tune up Kit	1
4	3.7.24.001	Brush - White	1
5	3.7.24.002	Brush - ϕ 25×70 White	1
		Brush - ϕ 38×80 White	1
		Brush - ϕ 25×60 Black	1
		Brush - ϕ 3×25 White	1
		Brush - ϕ 10×25 Double	1
		Brush - ϕ 13×77 White	1
6	2.3.4.34.015	Air Chute	1