

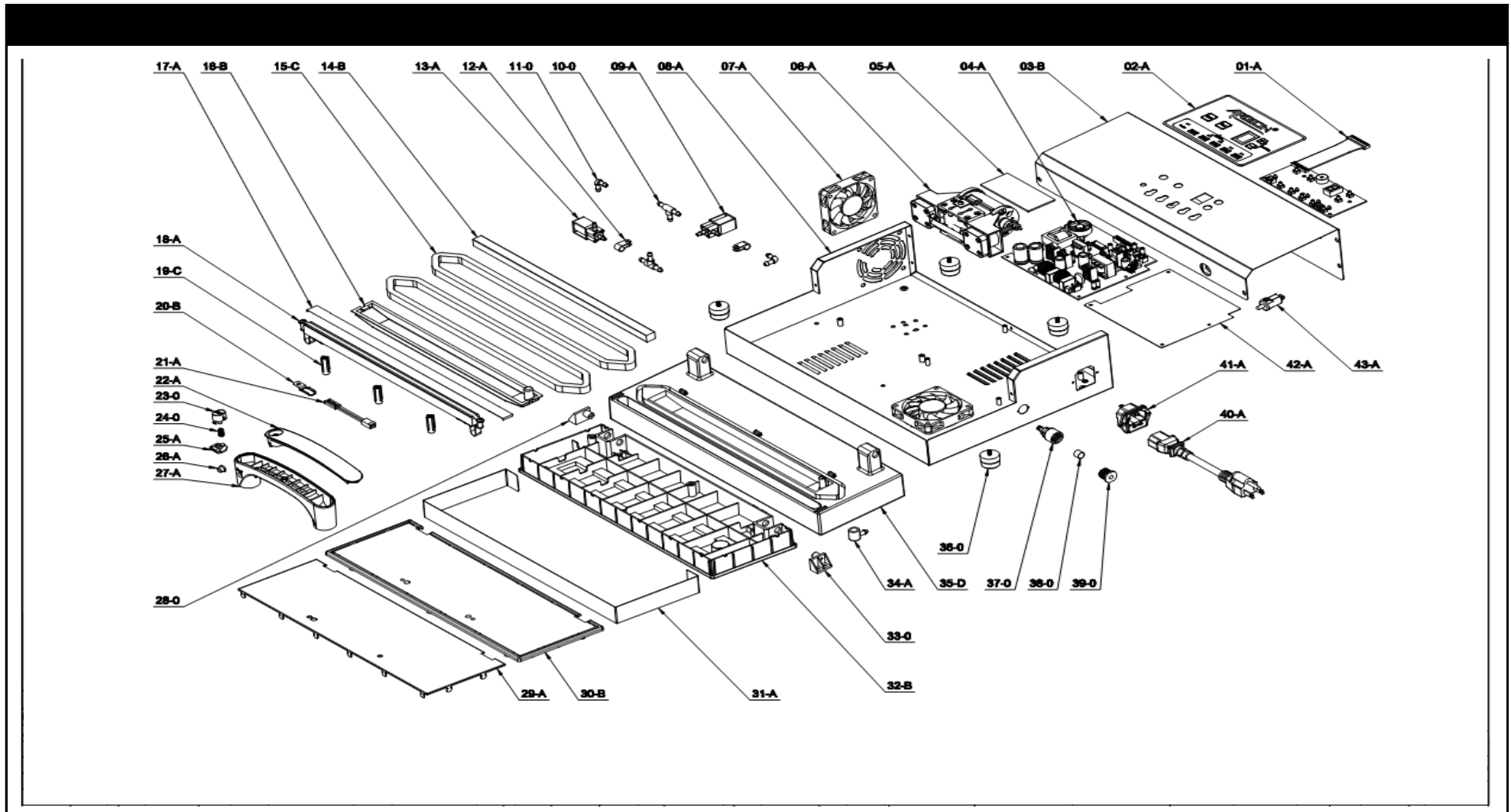


7529.0005

Onderdelen informatie
Erzatzteil information
Spare part information
Information de pièces







POS:	Art.No.:	Omschrijving:	Aantal:
1	9288.0380	control board	1
2	9289.0390	membrane switch	1
3		top cover	1
4	9288.0370	power board	1
5		motor insulation pad	1
6		pump assembly	1
7	9288.0300	fan	2
8		base plate	1
9	9288.0400	062621 magnetic valve	1
10	9288.0130	tee connector	2
11		right angle two way connector	2
12		cord holder	2
13	9288.0150	0626L magnetic valve	1

POS:	Art.No.:	Omschrijving:	Aantal:
14	9288.0430	heat seal rubber	1
15	9288.0410	seal ring	2
16		liquid tank	1
17	9288.0440	tape	1
18	9288.0310	sealing bar assenbly	1
19		support plate B of sealing bar	3
20		fuse iron hasp	1
21	9288.0320	temperature control fuse	1
22	9288.0330	handle cover	1
23	9288.0330	handle button	1
24	9288.0330	button spring	1
25	9288.0330	Start button board	1
26	9288.0330	silicone button	1

POS:	Art.No.:	Omschrijving:	Aantal:
27	9288.0330	bottom plate of handle	1
28	9288.0340	left hinge	1
29		main decoration plate	1
30		surface cover	1
31		side decoration plate	1
32		bottom plate of side cover	1
33	9288.0340	right hinge	1
34		small tube with a connector	1
35		vacuum chamber	1
36	9288.0360	rubber foot	4
37		suction connector B	1
38		ferrule of suction connectr A	1
39		suction connector A	1

POS:	Art.No.:	Omschrijving:	Aantal:
40		power cord	1
41		socket	1
42		power board insulation pad	1
43	9288.0350	micro switch	1