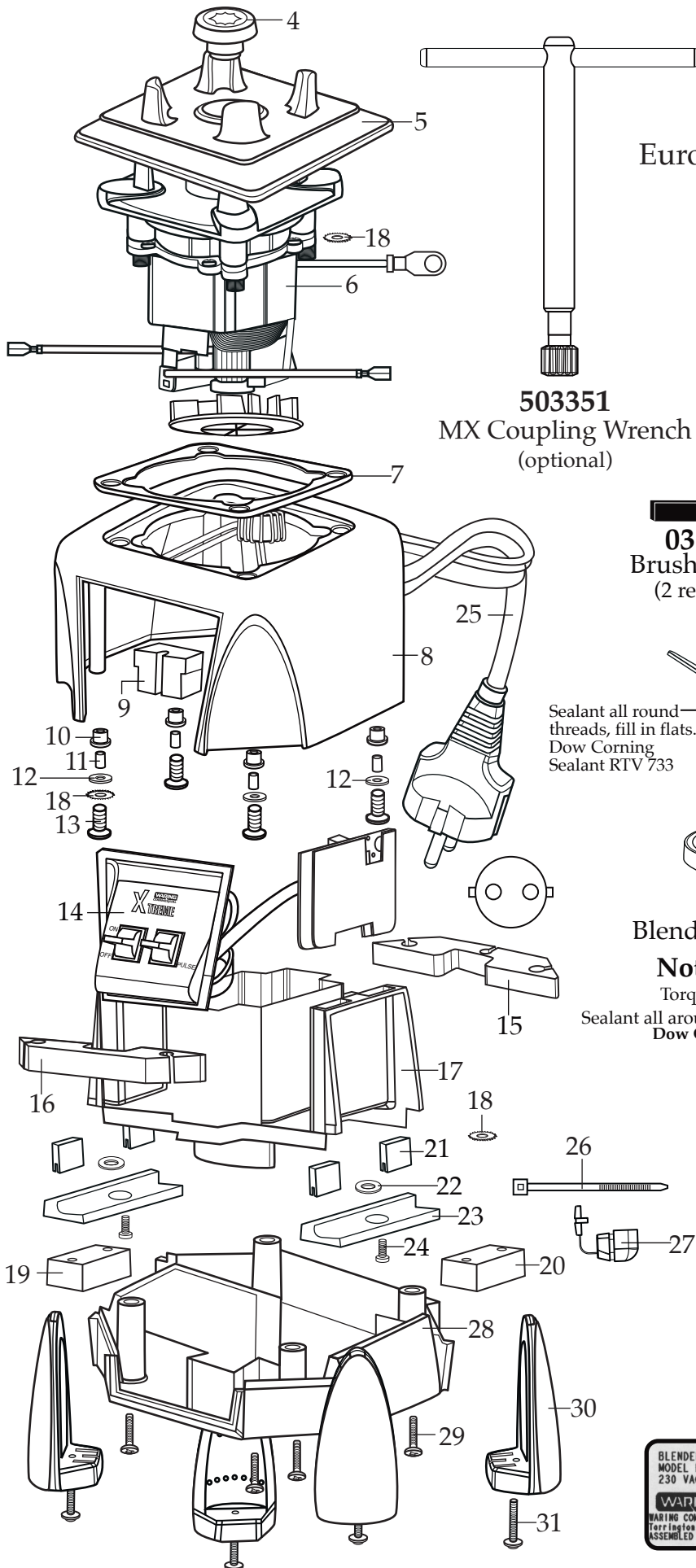


# WARING COMMERCIAL®

Europe Xtreme Blenders with Paddle Switch  
& 48 oz. Stackable Container

## MX1000XTPEE MX1000XTPSEE

Sound Enclosure



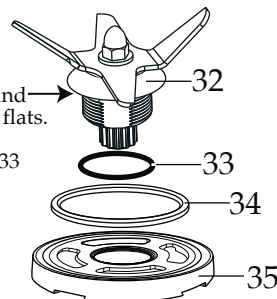
**503351**

MX Coupling Wrench  
(optional)



**036743**  
Brush/Spring  
(2 required)

Sealant all round  
threads, fill in flats.  
Dow Corning  
Sealant RTV 733



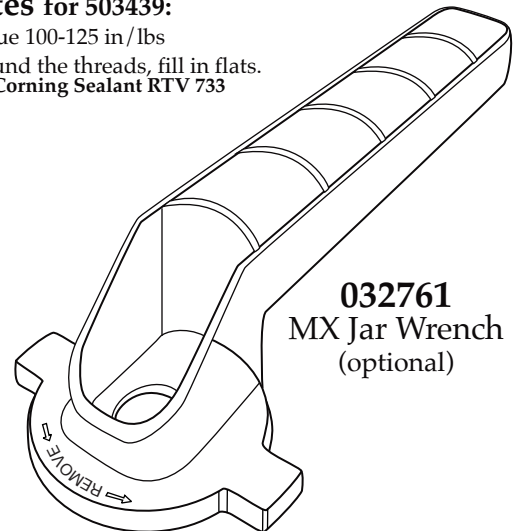
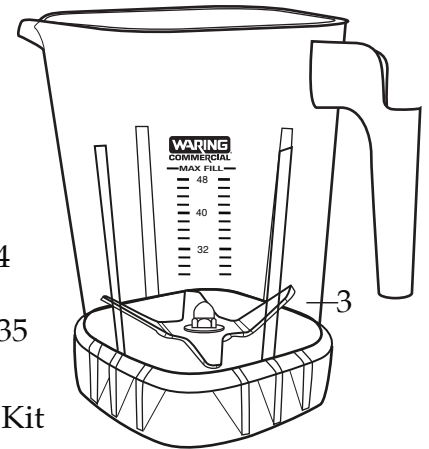
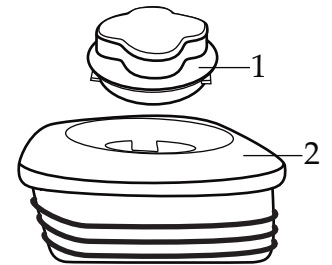
**030889**

Blending Assembly Kit

**Notes for 503439:**

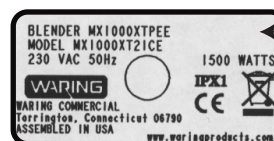
Torque 100-125 in./lbs

Sealant all around the threads, fill in flats.  
Dow Corning Sealant RTV 733



**032761**

MX Jar Wrench  
(optional)



Date Code Location  
YY|MM|DD  
year|year|month|month|day|day

**Catalog****Model**

MX1000XTPEE  
MX1000XTPSEE

MX1000XT21CE  
MX1000XT22CE  
(on units after 6/26/2008)

MX1000XT21EE  
MX1000XT22EE



<b>Illustration#</b>	<b>Part#</b>	<b>Description</b>
1	028769-E 026425-E	Jar Lid Cover (on units after 4/14/2008) Jar Lid Cover
2	028768 026424-V	Jar Lid (on units after 4/14/2008) Jar Lid
3	503439 030888 503348 503374 503010	48 oz Jar with Blending Assembly (on units after 2/26/2014) 48 oz. Stackable Raptor Container ONLY (changed after 2/26/2014) 48 oz Jar with Blending Assembly (on units after 2/25/2011 use 503349) 48 oz Jar with Blending Assembly (on units after 7/20/2009) (use 503309) - 503309 (use 503348) - 503348 (use 503439)
4	503601 028538	Drive Coupling with Adapter (on units after 1/7/2021) Drive Coupling
5	026442	Jar Pad
6	035398 028823	Leili Motor without Sensor (on units after 8/18/2017) ECM Motor without Sensor
7	026437	Dampening Plate Gasket
8	503382-E-67 503382-E	MX Housings, Ferrite Core & Cord (on units after 8/18/2017) MX Housings, Ferrite Core & Cord (on units after 9/10/2012)
9	028541	Motor Foam (2 required)
10	026439	Dampening Plate Bushing (4 required)
11	026453	Dampening Plate Sleeve (4 required)
12	026459	Washer (2 required)
13	028929	Sems (4 required)
14	036395 033466	Control Panel with Interlock (on units after 2/22/2019) Soft Start Control Panel (changed after 7/22/2013)
15	028248	Top Housing Foam Rear Baffle
16	028249	Top Housing Foam Front Baffle
17		Motor Housing is included with Illustration # 8
18	002943	Washer (3 required)
19	028247	Bottom Housing Foam Baffle
20	028542	Foam Baffle
21	034900	PCB Cushion (4 required on units after 7/18/2019)
22	037232	Flat Neoprene Washer (4 required on units after 7/18/2019)
23	037007	PCB Mounting Bracket (4 required on units after 7/18/2019)
24	013768	Screw (4 required on units after 7/18/2019)
25		Cord is included with Illustration # 8
26	013731	Cable Tie (2 required on units after 8/18/2017) (3 required on units after 4/14/2008) - (2 required)
27	007556 035384 007556	Strain Relief (changed after 6/25/2018) Strain Relief (on units after 3/30/2016) Strain Relief
28		Bottom Housing is included with Illustration # 8

## Catalog

MX1000XTPEE  
MX1000XTPSEE

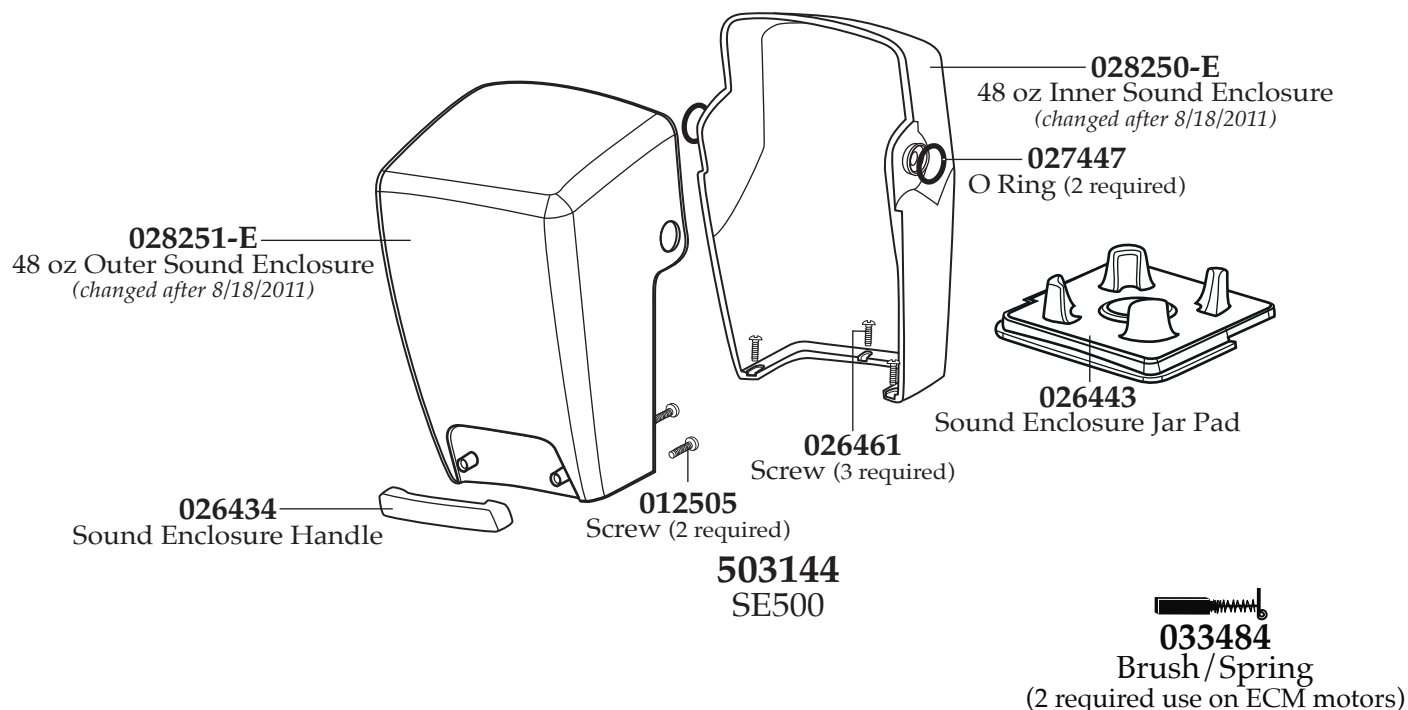
## Model

MX1000XT21CE    MX1000XT21EE  
MX1000XT22CE    MX1000XT22EE  
(on units after 6/26/2008)

**Waring Factory Service Center**  
314 Ella T. Grasso Ave.  
Torrington, CT 06790  
Tele. 1-800-269-6640

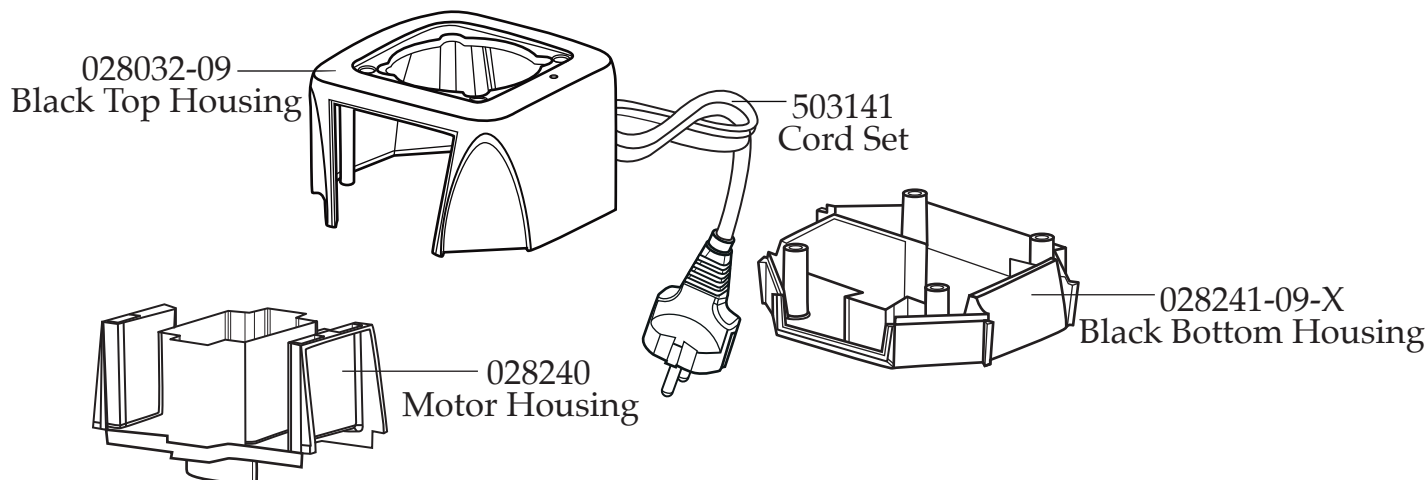
Fax 860-496-9017  
www.waringcommercialproducts.com

Illustration#	Part#	Description
29	012505	Screw (4 required)
30	026430	Corner Post (4 required)
31	028928	Sems (4 required)
32	503397	Blade Assembly (on units after 2/26/2014)
	503345	Blade Assembly
33	024271	O Ring
34	024268	Nut Gasket
35	029631	Bearing Holder Nut (Torque 100-125 in/lbs)



## Parts No Longer Used

(Last used on 9/10/2012)



MX1000XTPEE  
MX1000XTPSEE

MX1000XT21CE	MX1000XT21EE
MX1000XT22CE	MX1000XT22EE
<i>(on units after 6/26/2008)</i>	

**Fax 860-496-9017**  
**www.waringcommercialproducts.com**

